

# Profile of a Fraudster

Our study includes perpetrator data from more than 2,000 fraud cases, which can help organizations assess fraud risk in their own workforces.



November 14-20, 2021

## GENDER

**Males** committed more frauds and caused higher losses.

MALE



**\$150,000**  
Median loss

**72%**  
OF CASES

FEMALE



**\$85,000**  
Median loss

**28%**  
OF CASES

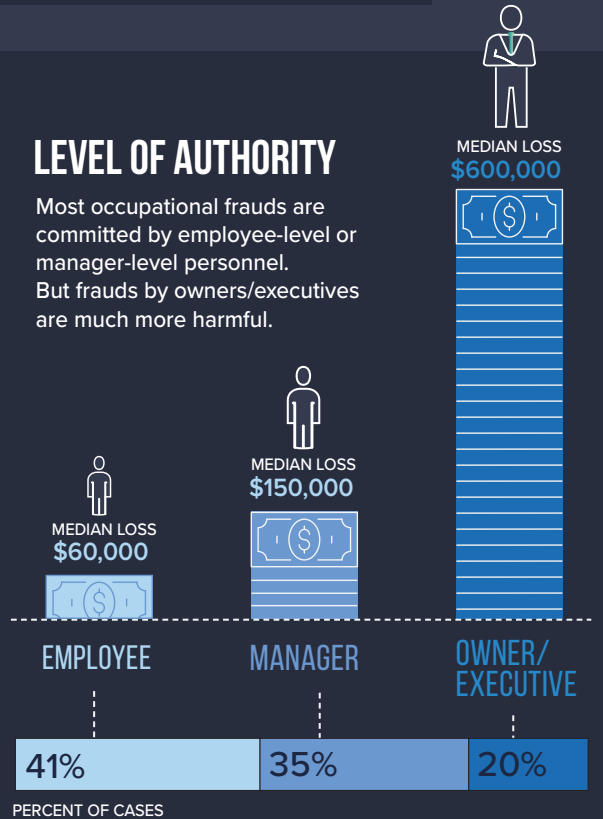
## TENURE

Occupational fraudsters who had been with their organizations at least 6 years caused **TWICE** the loss of less-tenured employees.



## LEVEL OF AUTHORITY

Most occupational frauds are committed by employee-level or manager-level personnel. But frauds by owners/executives are much more harmful.



## EDUCATION



**64%** of occupational fraudsters had a university degree or higher.

No university degree

**\$100,000** MEDIAN LOSS

University degree or higher

**\$195,000** MEDIAN LOSS

## HIGH-RISK DEPARTMENTS

More than three-fourths of all occupational frauds were committed by employees from these 8 business units:

Operations	15%
Accounting	14%
Executive/upper management	12%
Sales	11%
Customer service	9%
Administrative support	6%
Finance	5%
Purchasing	5%

## AGE

**Older fraudsters** caused much larger median losses

